

WELCOME TO Zoar Valley Multiple Use and Unique Area

- **USE CAUTION:**

- Prevent serious injury and risk of death, stay on marked trails, and keep at least 15 feet back from cliff edges.
- This property has slippery, loose rocks, steep slopes, cliffs, and swift water.
- Only enter gorge and Cattaraugus Creek from Valentine Flats Trail or Forty Road parking lot.
- Leave No Trace™: Carry in. Carry out. Pack out all trash, including food scraps.
- Camping is not allowed.
- Open campfires are not allowed.
- Alcohol and glass containers are not allowed.
- The property is only open sunrise to sunset.
- Do not enter private property or restricted areas. Please obey posted signs.

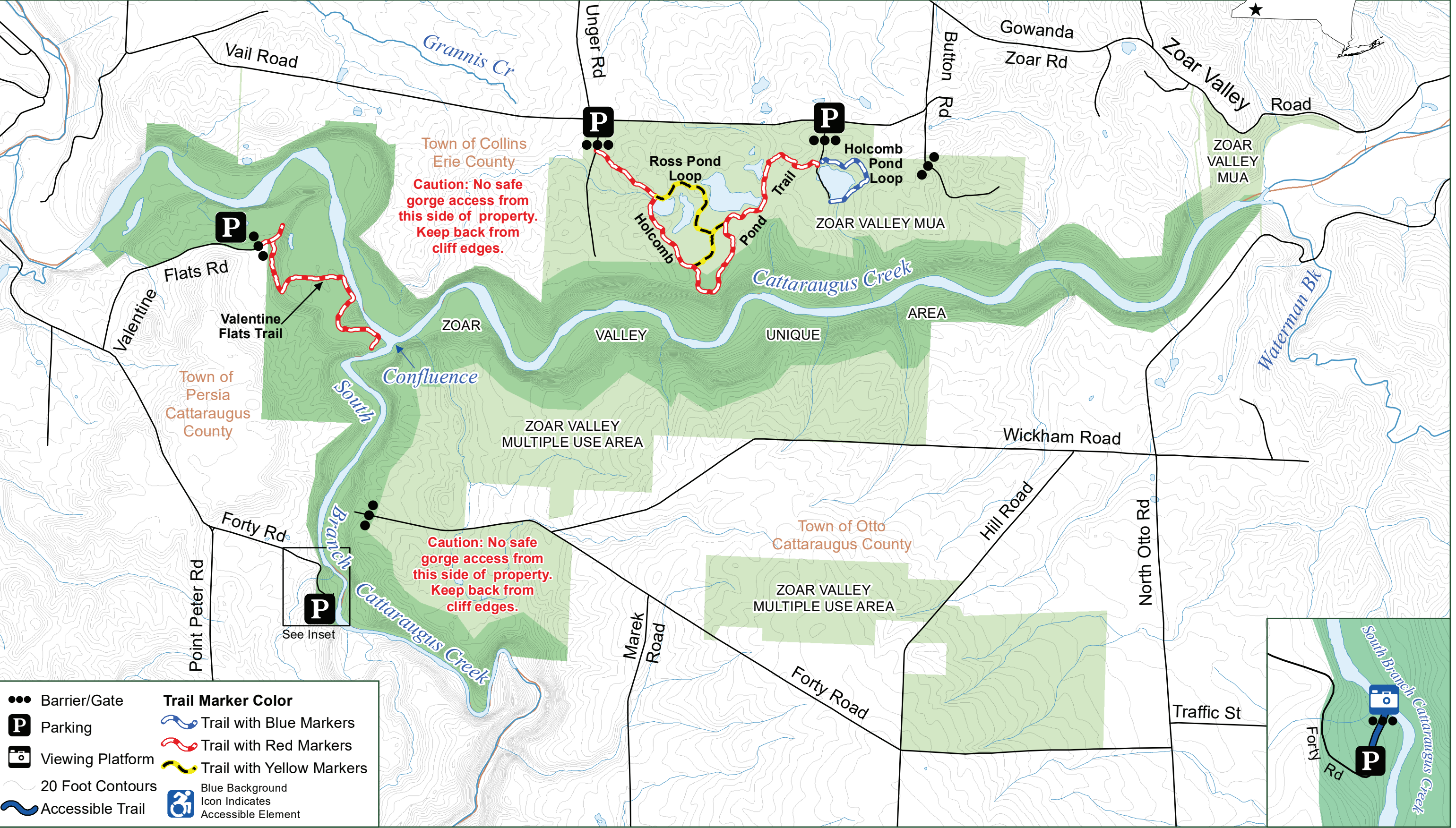
IN AN EMERGENCY, CALL: 911

To contact DEC, call 833-NYS-RANGERS (833-697-7264) 24/7.



Department of
Environmental
Conservation

Zoar Valley Multiple Use and Unique Area



●●● Barrier/Gate

P Parking

Viewing Platform

20 Foot Contours

Accessible Trail

Trail Marker Color

Trail with Blue Markers

Trail with Red Markers

Trail with Yellow Markers

Blue Background Icon Indicates Accessible Element