

WELCOME TO Zoar Valley Multiple Use and Unique Area

Forty Road Parking Area



This 3,014-acre property is one of the most scenic and ecologically diverse areas in Western New York, known for spectacular scenery created by its deep gorge, sheer cliffs, flowing waterfalls, and dense forests. From this parking area, an accessible trail leads to a scenic overlook where the road once crossed the creek. Due to private land upstream, hiking is permitted downstream only. Plan ahead while exploring the creek, know your surroundings, and leave enough time to hike in and out.

Hikers can also reach the creek and gorge from the Valentine Flats parking area by taking the steep Valentine Flats Trail to the confluence of the South and Main branches of Cattaraugus Creek.

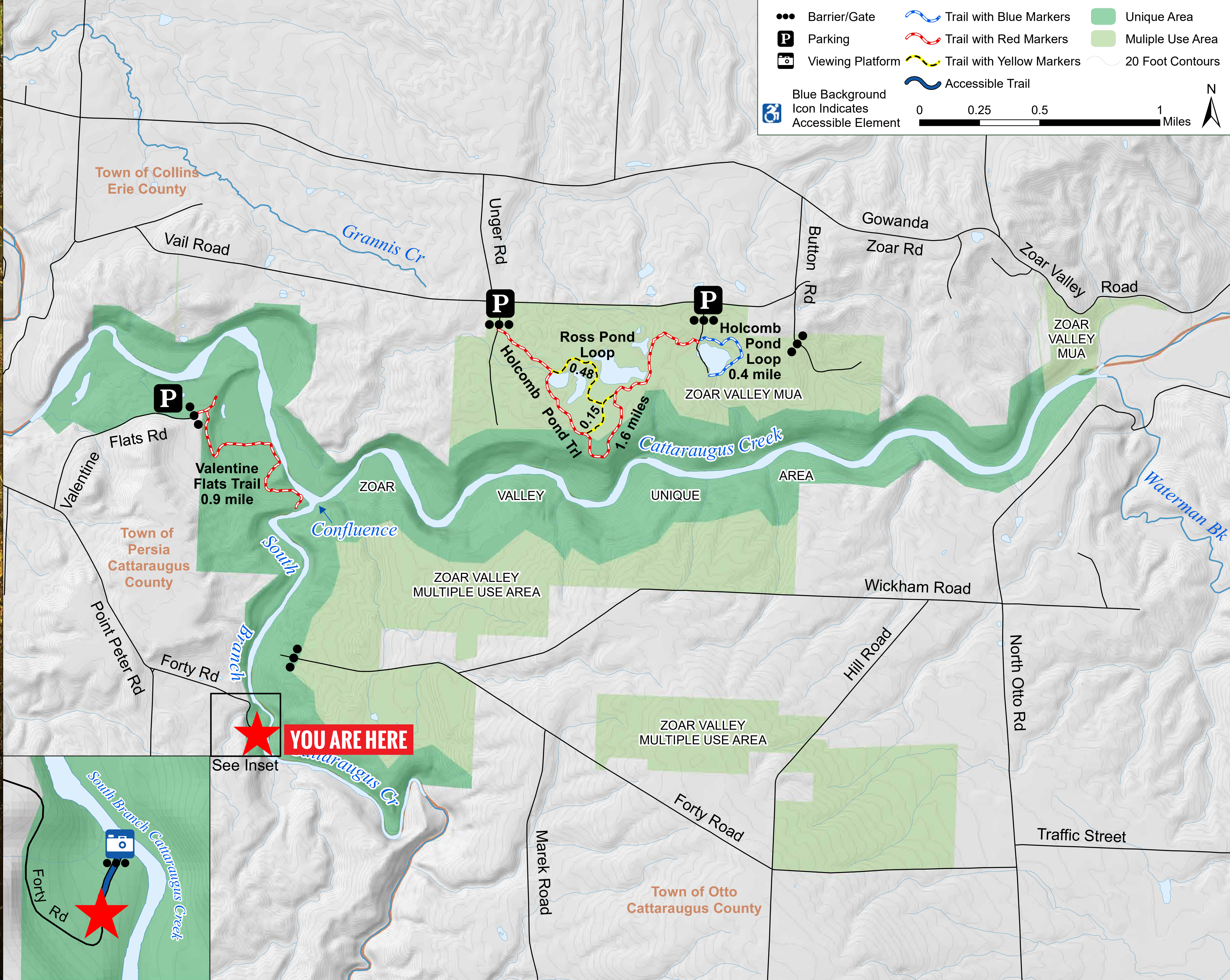
Park at Vail Road on the Erie County side of the property to access the Holcomb Pond Trail system, which runs through mixed hemlock/hardwood forests and around ponds before looping back to the road. **There is NO gorge or creek access from the Erie County side of the property.**

NOTES

- USE CAUTION:**
 - Prevent serious injury and risk of death. Stay on marked trails, and keep at least 15 feet back from cliff edges.
 - This property has slippery, loose rocks, steep slopes, cliffs, and swift water.
 - Only enter gorge and Cattaraugus Creek from Valentine Flats Trail or Forty Road parking lot.
- Leave No Trace™:** Carry in. Carry out. Pack out all trash, including food scraps.
- Accessibility:** An accessible 0.10-mile trail leads to a viewing platform. Use the viewing platform for the best views of the gorge.
- Camping is not allowed.
- Open campfires are not allowed.
- Alcohol and glass containers are not allowed.
- The property is only open sunrise to sunset.
- Do not enter private property or restricted areas. Please obey posted signs.



Eastern bluebird



OPEN FOR PUBLIC USE

Volunteers from the
Finger Lakes Trail
Conference maintain
trails on the property.



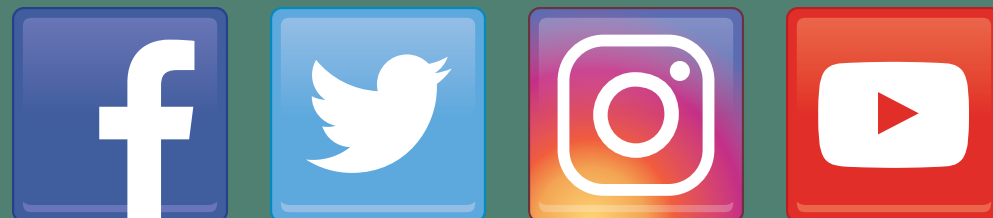
CONTACT

NYSDEC Region 9
Allegany Sub-Office
182 East Union Street, Ste. 3
Allegany, NY 14706

IN AN EMERGENCY CALL: 911
To contact DEC, call **833-NYS-RANGERS**
(833-697-7264) 24/7.

www.dec.ny.gov

CONNECT WITH NYSDEC:



ZOAR VALLEY

WELCOME TO Zoar Valley Multiple Use and Unique Area

Valentine Flats Parking Area



This 3,014-acre property is one of the most scenic and ecologically diverse areas in Western New York, known for spectacular scenery created by its deep gorge, sheer cliffs, flowing waterfalls, and dense forests. To reach the gorge from here, take the steep Valentine Flats Trail into the area ending at the confluence of the South and Main Branches of Cattaraugus Creek. The hike back from the gorge can take longer than the trip in due to the steep terrain. Plan ahead while exploring the creek, know your surroundings, and leave enough time to hike in and out.

Hikers can also reach the creek and gorge from the Forty Road parking area.

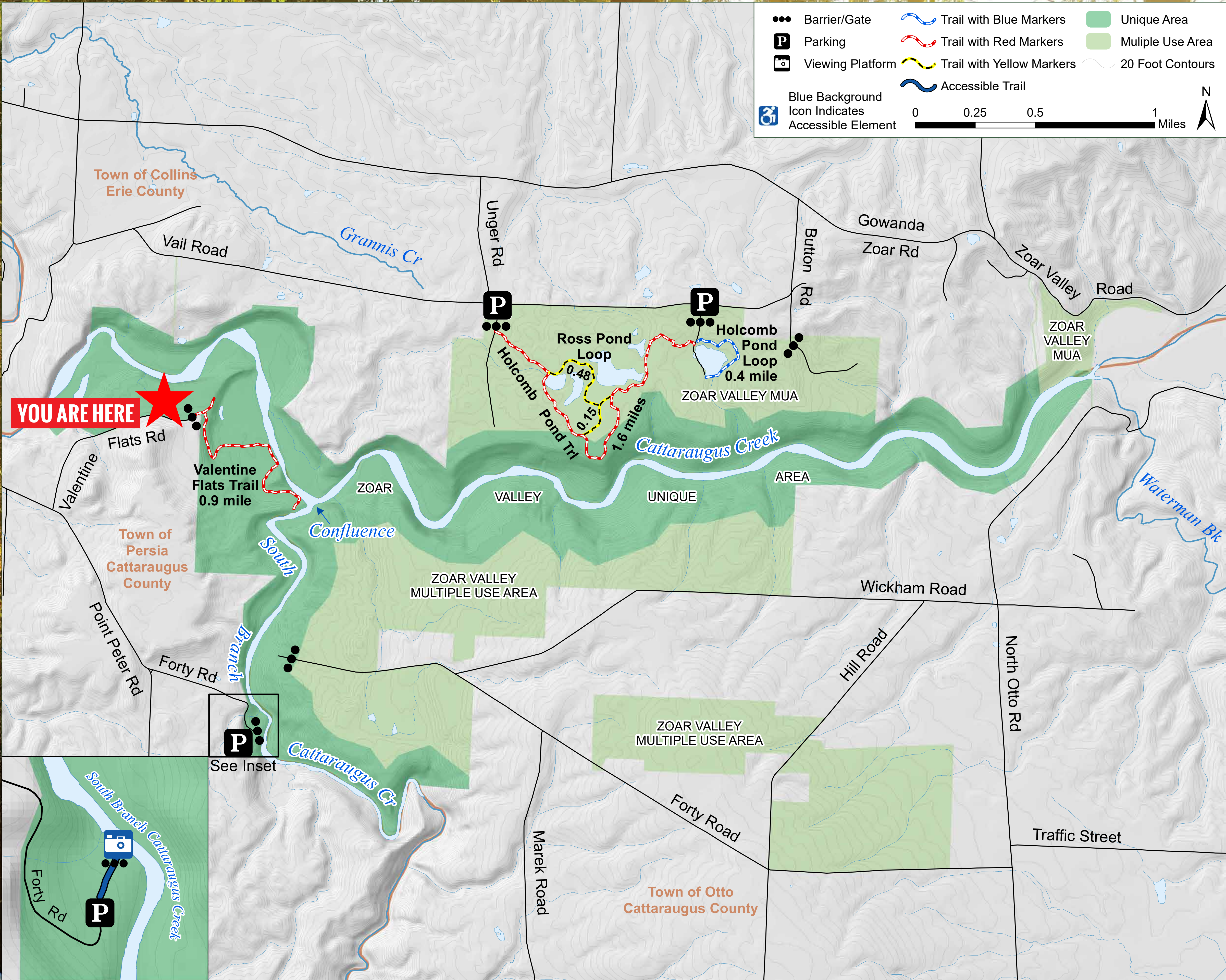
Park at Vail Road on the Erie County side of the property to access the Holcomb Pond Trail system, which runs through mixed hemlock/hardwood forests and around ponds before looping back to the road. **There is NO gorge or creek access from the Erie County side of the property.**

NOTES

- **USE CAUTION:**
 - Prevent serious injury and risk of death. Stay on marked trails, and keep at least 15 feet back from cliff edges.
 - This property has slippery, loose rocks, steep slopes, cliffs, and swift water.
 - Only enter gorge and Cattaraugus Creek from Valentine Flats Trail or Forty Road parking lot.
- **Leave No Trace™:** Carry in. Carry out. Pack out all trash, including food scraps.
- Camping is not allowed.
- Open campfires are not allowed.
- Alcohol and glass containers are not allowed.
- The property is only open sunrise to sunset.
- Do not enter private property or restricted areas. Please obey posted signs.



Eastern bluebird



OPEN FOR PUBLIC USE

Volunteers from the
Finger Lakes Trail
Conference maintain
trails on the property.



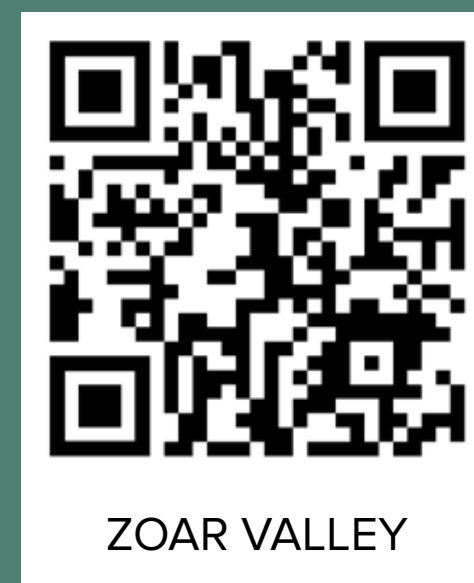
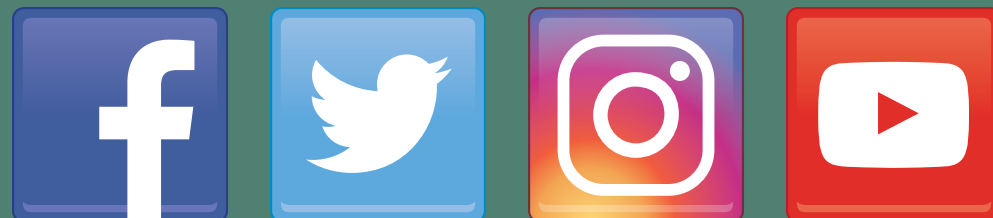
CONTACT

NYSDEC Region 9
Allegany Sub-Office
182 East Union Street, Ste. 3
Allegany, NY 14706

IN AN EMERGENCY CALL: 911
To contact DEC, call **833-NYS-RANGERS**
(833-697-7264) 24/7.

www.dec.ny.gov

CONNECT WITH NYSDEC:



ZOAR VALLEY